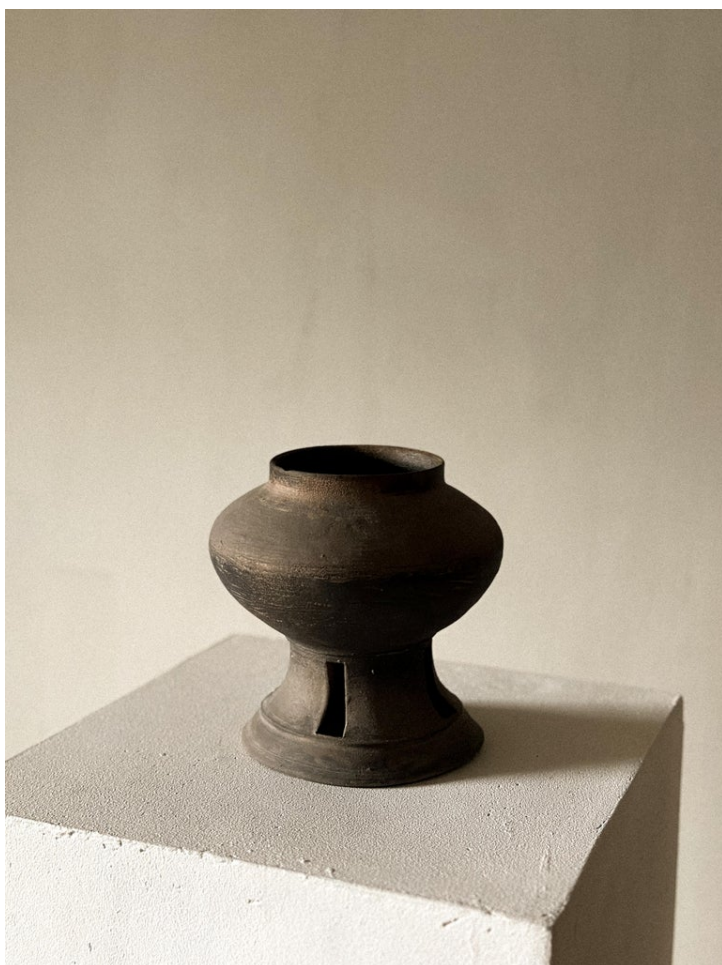


BRUKSMANN



Antique Jar, Korea. Silla period (57 BCE – 935 CE)

A jar, Silla period (57 BCE – 935 CE). Raised, wide foot with openwork decoration. Impressed decoration on the body. Ash glaze. Wear consistent with age. PROVENANCE Johanne Huitfeldt's (1932-2023) collection of Asian ceramics and antiquities.